

The Methodist Church, Ainsworth

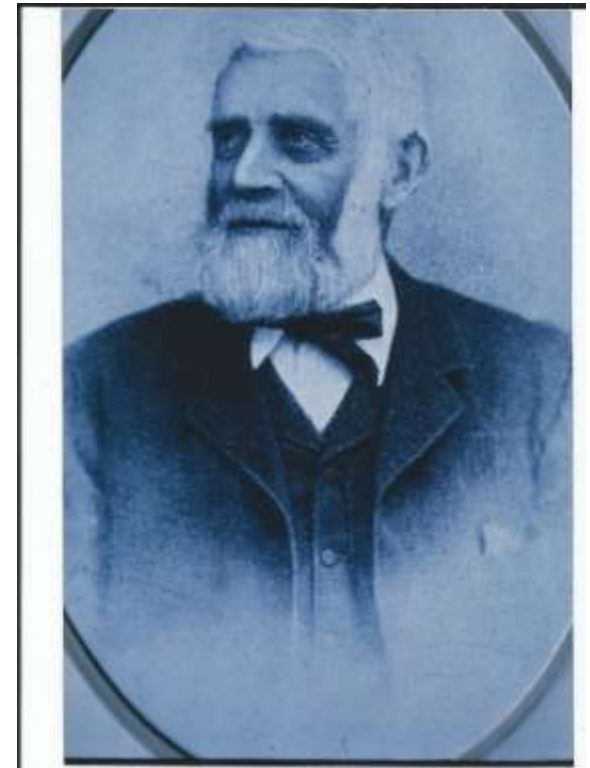
With thanks to those who provided the information, especially David and Eileen

David tells us that his Great Great Grandfather was Robert Brooks, (born on 13th January 1821), who was the quarry master at the quarry on Delph Lane.

Robert was instrumental in establishing the Methodist church in Ainsworth

David's auntie told him the family story that Robert was a drinker and one evening, whilst going into the White Horse, he missed the step and fell down. Someone going in said to him "you will have to watch that step Mr Brooks when you leave the pub"

At which point he left and went straight home and vowed never to touch alcohol again. He then started a cottage meeting in his home, 7 Hey Club Row



Mr Brooks of 7 Delph Lane



7 Hey Club Row (now 27 delph lane) where Ainsworth Methodist Chapel started as a cottage meeting

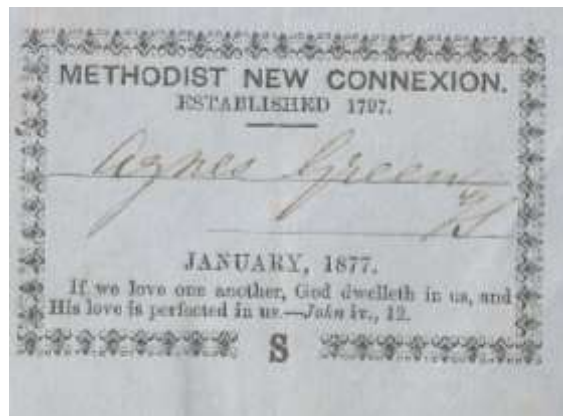
The numbers grew and soon the cottage was found to be too small

There was already a chapel building on Bury Old Road (number 71) as Margarett Mandeville (The Wesleyan Countess) had paid to have a Chapel built

but the Wesleyan chapel did not flourish and the building had been used as a smithy and as a dwelling house.

so the Methodist group purchased it from her in 1846. (The money she then donated to Breightmet Methodist Church (no longer there))

The building was used as Chapel and School. There were pews, and there were forms for the Sunday School. It was also used almost every night of the week – so much so that special provision had to be made so that the choir could get a night to practice!



AINSWORTH HISTORY SOCIETY

old church



Old chapel / Sunday school (now a bungalow) 71 Bury Old Road

Later the Methodists purchased the field opposite the Chapel at a cost of £142 11s 3d, to be used as a burial ground

Ainsworth United Methodist

Burial Ground



LIST OF CHARGES

Rules and Regulations

Adopted at the Annual Trustees' Meeting
held January 21st, 1915. To come
into operation on and after
February 1st, 1915.

J. SCHOLES, PRINTER, RICHARD STREET, BOSTON.

	£	s.	d.
1. For a New Grave	1	0	0
2. Opening of a New Grave, 1/- per foot, with a minimum charge of	0	5	0
3. Re-opening Grave, 1/- per foot, with a mini- mum charge of	0	5	0
4. Flags for Covering Coffins (full size) ...	0	3	0
5. Minister's Fee	0	2	6
6. Caretaker's Fee	0	1	0
7. Use of Bier	0	1	0
8. For Right of Erecting Monuments, 6-ft. high or over	1	0	0
9. do. do. under 6-ft. in height	0	15	0
10. For Right of Erecting Tombstones ...	1	0	0
11. For Removing and Replacing Tombstones	0	10	0
12. For Right of Erecting Headstones up to 3-ft. 6-in. in height	0	10	0
13. Headstones over 3-ft. 6-in. in height to be charged 1/- per foot or fraction of a foot extra.			
14. Charge for Flat Stones	0	5	0
15. Flat Stones with Railings round, 2/6 extra.			
16. Charge for Kerbs	0	5	0
17. For Kerbs with Railings round, 2/6 extra.			
18. Charge for Tiles or Wood Bordering ...	0	2	6
19. Monuments, Headstones or Flat Stones covering two spaces to be charged double.			
20. Charge for Removing and Replacing Head- stones with Kerbs	0	7	6
21. Charge for Removing & Replacing Flat Stones	0	5	0
22. Charge for Removing and Replacing Kerbs	0	5	0
23. Charge for Removing and Replacing Tiles or Wood Bordering	0	1	0
24. Bricking-up of Graves shall be counted as extras, for which arrangements of same must be made with the Sexton. Vaults to be 9-in. walls; Walled Graves to be 4½-in. walls.			

As the congregation grew, they decided to save and build a new Chapel on that land

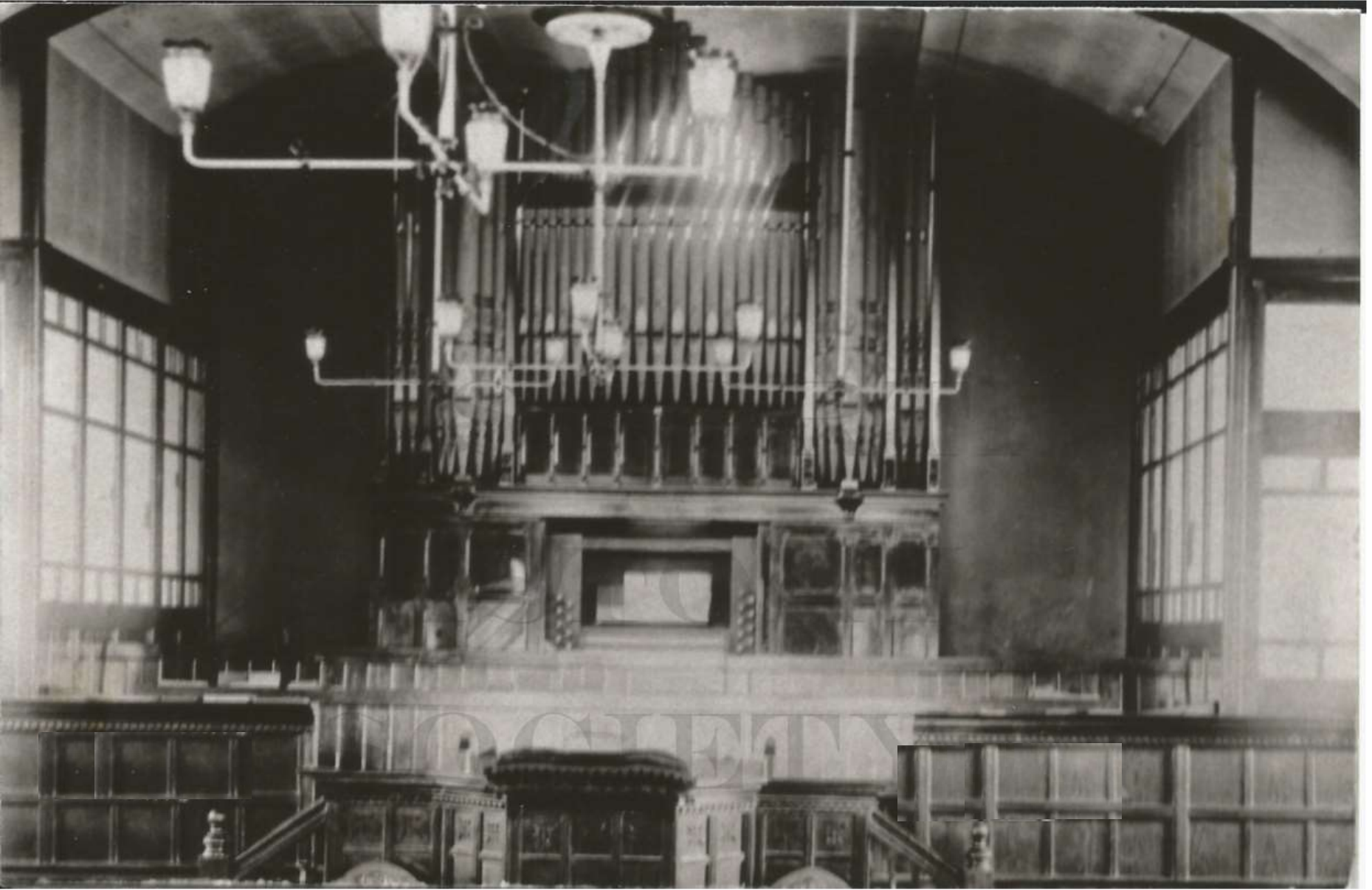
The new Chapel was completed at a cost of £1119 18s 0d and opened in December 1892.

David thinks it possible that most of the stone for the Chapel came from the quarry as many of the Brooks family were involved in the quarry.

and he writes:

“Robert Brooks must have been held in high regard as the memorial in the Chapel burial ground was erected by donations given from the societies he had started and the members within the chapel”





Interior of Ainsworth Methodist Chapel prior to electricity supply – with gas lights and original organ

However, the old building continued to be used and was the Methodist Sunday School until the present day Sunday School was built in 1934

There was a service to mark the laying of the foundation stone for the new Sunday school building



1934 New Methodist school in progress

And there used to be a tennis court in front of the new door

Walter Earnshaw recalled that as there was no pavilion, they had to sit on the wall whist waiting for their turn to play

– everyone was keen to “have a knock”,

but less keen to roll the court after play!!

A wooden pavilion was soon constructed

And many enjoyable hours were spent at the club, until the war in 1939

and it opened in 1934

7-0—"AT HOME"

Host and Hostess : Councillor E. A. and Miss WALKER.

HYMN 5.

GOD is with us, God is with us ;
So our brave forefathers sang ;
Far across the field of battle
Loud their holy war-cry rang ;
Never once they feared or faltered,
Never once they ceased to sing,—
God is with us, God is with us ;
Christ our Lord shall reign as King !

Great the heritage they left us,
Great the conquests to be won,
Armed hosts to meet and scatter,
Larger duties to be done ;
Raise the song they nobly taught us,
Round the wide world let it ring,—
God is with us, God is with us ;
Christ our Lord shall reign as King !

Speed the Cross through all the nations,
Speed the victories of love ;
Preach the gospel of redemption
Wheresoever men may move ;
Make the future in the present ;
Strong of heart, toil on and sing,—
God is with us, God is with us ;
Christ our Lord shall reign as King !

Soon the struggle will be over,
Soon the flag of strife be furled ;
Downward from his place, defeated,
Shall the enemy be hurled ;
Onward, then, with ranks unbroken ;
Sure of triumph, shout and sing,—
God is with us, God is with us ;
Christ our Lord shall reign as King !

HIGH-CLASS CONCERT.

M.C.—Rev. J. H. WOLSTENHOLME.

Artists :

Contralto—Miss AGA BOBILL.
Elocutionist—Miss EVELINE BODEN.
Tenor—Mr. JACK ENTWISTLE.
Baritone—Mr. J. N. HAIGH.
Humorist—Mr. T. GOLDSMITH.

Refreshments.

Treasurer's Statement.

Thanks.

Ainsworth Methodist Church.

New Sunday School

The Opening Ceremony

in connection with the above Sunday School
will be performed

Saturday Afternoon, September 29th, 1934

by

S. W. Piling, Esq., J.P.

(of Wotton Hall, East Yorkshire).

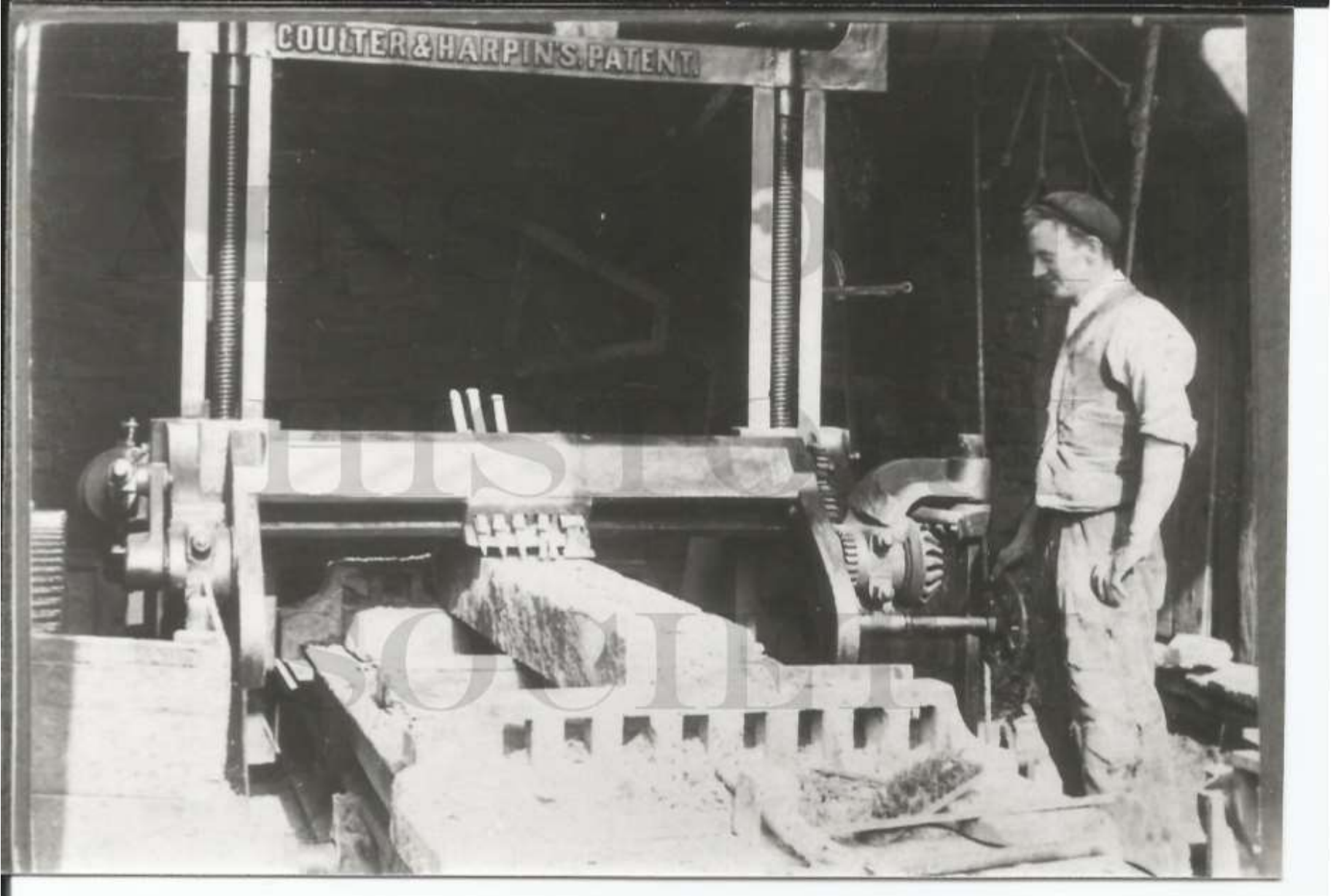
The FORMAL OPENING of the School will take place at 3 o'clock, presided over by JAMES HALLOWS, Esq., of Lytham. At 4 o'clock a DEDICATORY SERVICE will be held, conducted by the Rev. R. H. B. SHAPLAND of Southport. TRA will be provided in the Old Schoolroom at 5-15 p.m., at a charge of One Shilling each for Adults, and Eightpence for Children of 8 years and under.

At 7 p.m. a GRAND "AT HOME" will be held in the New School at which a High-class Concert will be given. Host and Hostess—COUNC. ELLIS A. WALKER and MISS WALKER. Prices of Admission—One Shilling for Adults, Sixpence for Children under 14 years of age. Refreshments at reasonable charges.

*The Minister, Trustees and School Officials
desire your Company and that of your
friends on this great occasion*

When the Sunday School was demolished, stone from the old building was used to build a wall along the front and west side of the graveyard

The plaque from the original chapel is in the wall, by the gate and the gate pillars were cut from stone from the quarry.



Stonemason at quarry on Delph Lane cutting stone for main gate pillars



1943: Large stone fell off main Methodist chapel roof in gales and damaged porch roof. So a Restoration Fund was set up

AINSWORTH METHODIST CHURCH

Restoration Thanksgiving



Saturday, February 5th, 1944 :

GIFT DAY

SERVICE IN CHAPEL at 3-15., conducted by
The Rev. J. E. Eagles, M.C., of Rochdale,
and The Rev. J. J. Perry, of Bolton.
TEA, 5-0. ENTERTAINMENT, 6-30.

Sunday, Feb. 6th: SPECIAL SERVICES, 2-45 and 6-0,
conducted by The Rev. J. J. Perry.
Soloist : Madam Mary Roscoe.

Sunday, Feb. 13th: SPECIAL SERVICES, 2-45 and 6-0,
conducted by The Rev. Percy H. Smith.
Soloist : Madam Vera Lofthouse

The Methodists used to walk at Whitsun

“sermons” were one of the main event of the year

The services on Sermons Sunday were particularly popular and frequently chairs and forms had to be brought in as the pews were full.

On one particular Sunday the chapel was so full that men had to sit in the pulpit with the minister, the communion rail area was full of chairs, as was the entrance and the two vestries

and six young people had to sit outside on the chapel steps!!

People used to come early to the Sermons services and there was so much chattering – people not having met for a year – that it was thought that it would be more seemly to have community hymn singing

but the result of this was that people came even earlier for the singing!!

As with other churches in the village, there was a thriving social side including rambling society and amateur dramatics



Rambling Club from Ainsworth SS circa 1900



Chapel Christmas party



AINSWORTH METHODIST GUILD

PRESENTS

LIFE IN THE OLD DOG

A North country comedy

by

MERVYN WILSON

Saturday, 27th September.

Wednesday 1st October.

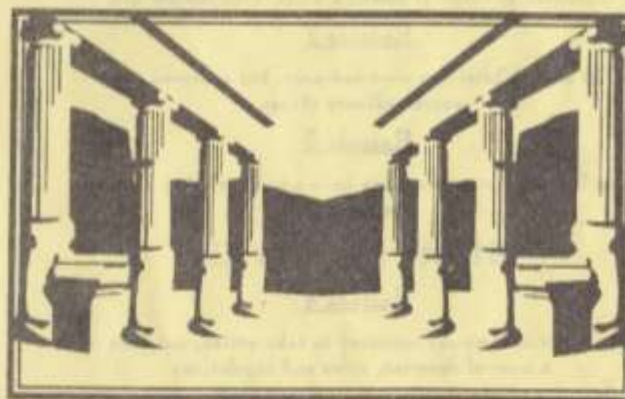
Saturday, 4th October.

Ainsworth Methodist & Parish Churches

present

THE ACTS OF LUDICRUS

BY NICK PAGE



Friday 7th ~~to Saturday 8th~~ October 1994

at 7.30pm

Adults £2 Children £1

Senior Citizens £1.50

and there have been Flower Festivals; scarecrow competitions and Christmas tree displays

